

INSIDE

Television programmes.....D2
 Crossword and Sudoku.....D3
 Movies.....D3
 Diary.....D5
 Stars.....D6

The Southland Times
Unwind

BATMAN
 ... is back **D3**



Doherty returns

Brenda Walsh is all grown-up and returning to *Beverly Hills, 90210*, this year. **Kinney Littlefield** reports.

CAST members of the new spin-off, *90210*, are speculating whether Shannen Doherty will be equally mature when she reprises her role as the grown-up Brenda Walsh.

"I have heard some of the stories," *90210* star Anna-Lynne McCord said of the sometimes-volatile relationship between Doherty and co-star Jennie Garth on the original series, which aired from 1990 to 2000.

Garth is returning to her role as Kelly Taylor, now a school guidance counsellor, on *90210*.

In the new series, Doherty's Walsh is now a famous theatre director invited back to West Beverly Hills High School to stage a musical, the network announced last week.

Her guest role plays out over multiple episodes, the network said.

"If she and Jennie have it out while I'm there, okay, then, all right, so that's the story," McCord said of any possible discord during production.

"We're co-workers, we're going to be co-stars and I want to treat her (Doherty) with the respect that I would treat any other co-star," said McCord, who played the evil Eden on television's *Nip/Tuck*.

Continued page D4



Shannen Doherty

An ode to a role model

MATE
 MARK WILSON



THE Tri Nations is in full flight and despite barely lifting an eyelid at the Super 14 and early season test matches, now that the Stags have taken to the field, my zest for rugby has returned.

At the risk of mind-numbingly adding to the incredible amount of rugby commentary already in the media I'd like the chance to write an ode to an often unheralded player, who is hanging up his boots after a decade at the coal face.

Firstly, though it seems that Graham Henry, not surprisingly, didn't read my column last week and after seeing the team named, I came close to spontaneously combusting from burning rage and utter disbelief at Jimmy Cowan being left on the pine again.

While I hope to see the ABs dish out a hiding worthy of a baby-stealing-tingo to Robbie's band of outback crusaders, I don't think I'm the only one feeling a little edgy heading into this week's test. Let's hope Cowan's time on the naughty seat is over and he can provide 15 or 20 minutes of the crisp passing, abrasive defense and explosiveness that has been lacking at the base of the scrum.

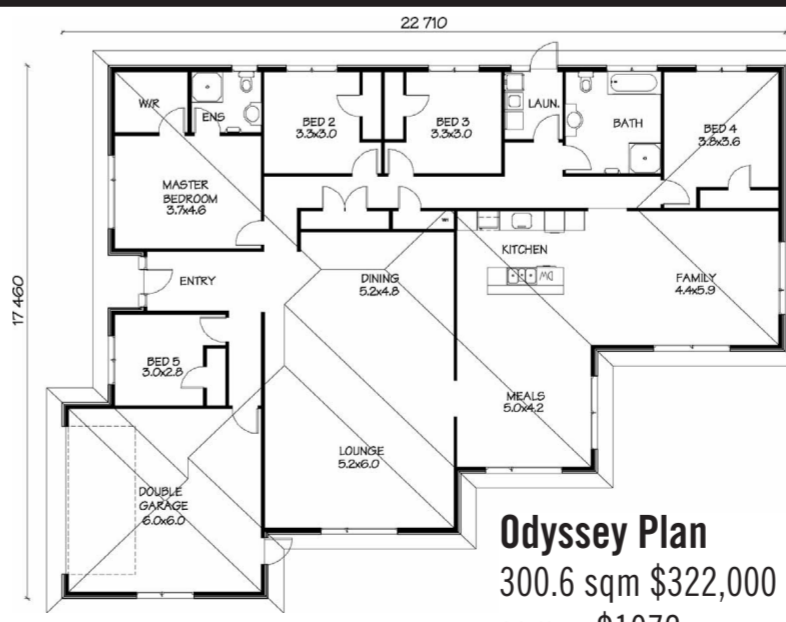
Sticking with the theme under-appreciated, New Zealand rugby lost one of its great, albeit undervalued hard men this week. Jono Gibbs is, in my mind, the embodiment of qualities that at times some of the current generation of players lack. His performance for the NZ Maori against the Lions in 2005 was one of the most impressive by a forward I have ever witnessed in my lifetime. Despite injury he stood up and led his team not only by example but by rallying his troops with potent leadership skills. He didn't hide when the going got tough nor did he crack under pressure and make poor decisions, he also didn't just stick to a game plan that wasn't working, he took charge and made the plan. Like a true captain akin to Martin Johnson leading 13 bedraggled Englishmen to victory against the ABs in 2003, he inspired a great win.

Play of that nature was desperately absent at the last World Cup.

Gibbs is a loyal man; he never scampered off overseas chasing pots of gold, despite on many occasions narrowly missing All Black selection.

I met him only once when the Chiefs were down south on a pre-season camp and I found him to be a humble, down-to-earth Kiwi bloke. You wouldn't see Gibbs turning up to Auckland night clubs like Hollywood A-list celebs in a Hummer with minders — behaviour a few of the current batch are prone to. He is just one of the mere mortals in public and that's a rare quality. I will miss his play and, as I have said, we don't need to elevate each and every sports star to that role model pedestal but Gibbs is definitely one who exudes impeccable role model qualities for the next generation.

Cromwell Show Home opens August 3rd at 12pm



- ✓ **Solid construction** – Timber or Zog steel framing
- ✓ **Warmth** – Double glazing, pink batts R 2.8 walls R 3.6 ceilings
- ✓ **Water saving** – Methven satin jet shower heads
- ✓ **Choices** – Gerard shingle, concrete tile, or metal tile roofs
- ✓ **Brands we trust** – Fisher and Paykel appliances incl double dish drawers, and range hood
- ✓ **Style** – Italian porcelain wall hung vanities
- ✓ **Professional** – Quality kitchens and Design Consultants
- ✓ **Reliability** – Methven Minimalist tapware
- ✓ **Finishing touches** – Ladder towel rails, wardrobe organizers, Colour Consultants
- ✓ **Turn key** – Complete floor coverings
- ✓ **Security** – Well respected company, 7 year warranty

Canterbury • Central Otago • Nelson • Marlborough • Southland www.goldenhomes.co.nz

Visit one of our show homes or call us today. We will design your floor plan and provide you a quote for FREE.

Invercargill Show Home Opening Soon
 Cromwell Office 3c Murray Terrace P. 03 215 4785
 Mon to Friday 9am–5pm & Sun 12pm–4pm

Cromwell Show Home Opening Soon 4 Alpha Street
 Cromwell Office 3c Murray Terrace P. 03 445 4785
 Mon to Friday 9am–5pm & Sun 12pm–4pm



GOLDEN HOMES
 "It's a better place you own..."